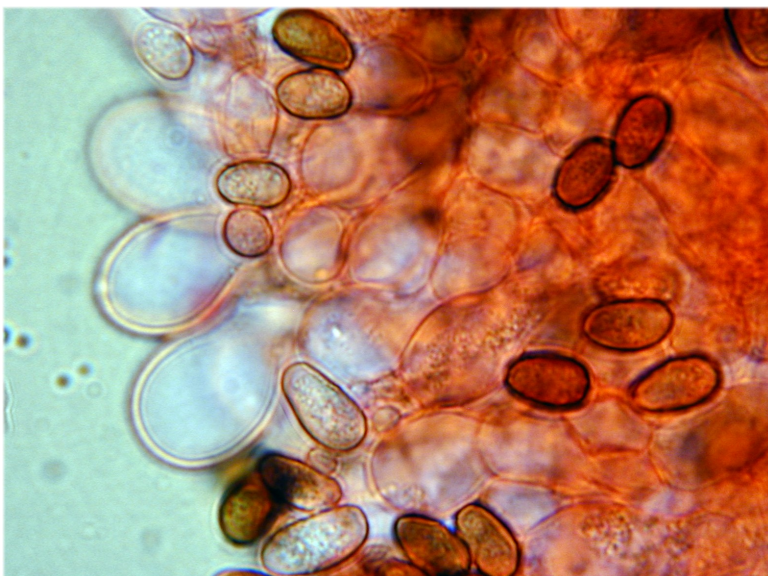


**Psathyrella spadiceogrisea** (Schaff: Fr.) Mre



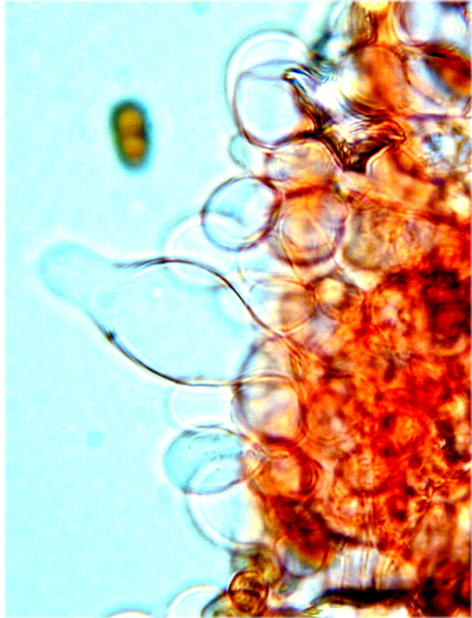
# *Psathyrella spadiceogrisea* (Schaff: Fr.) Mre

Levier et Champmartin 15.04.2012

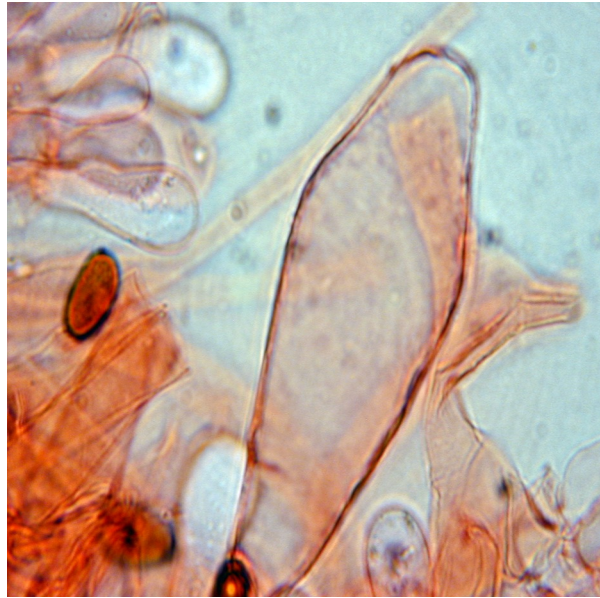


Cellules clavées de l'arête des lames et spores

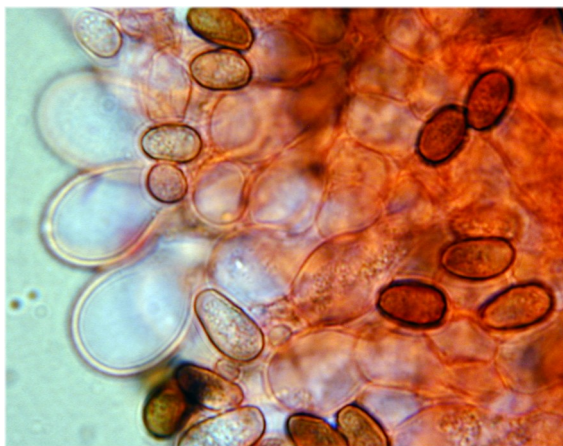
# **Psathyrella spadiceogrisea** (Schaff. Fr.) Mre



Cheilocystide



Pleurocystide



Cellules marginales nombreuses

